

- PROPOSED LEGEND**
- SANITARY M.H.
 - CLEAN OUT
 - CATCH BASIN
 - CATCH BASIN
 - CATCH BASIN
 - STORM M.H.
 - HYDRANT
 - GATE VALVE & WELL
 - SHUT OFF
 - SHUT OFF
 - STORM
 - SANITARY
 - WATER MAIN
 - PRE-ELEVATION
 - FG FINISH GRADE
 - FF FINISH FLOOR
 - IE INVERT ELEVATION
 - TC TOP OF CURB
 - GU GUTTER

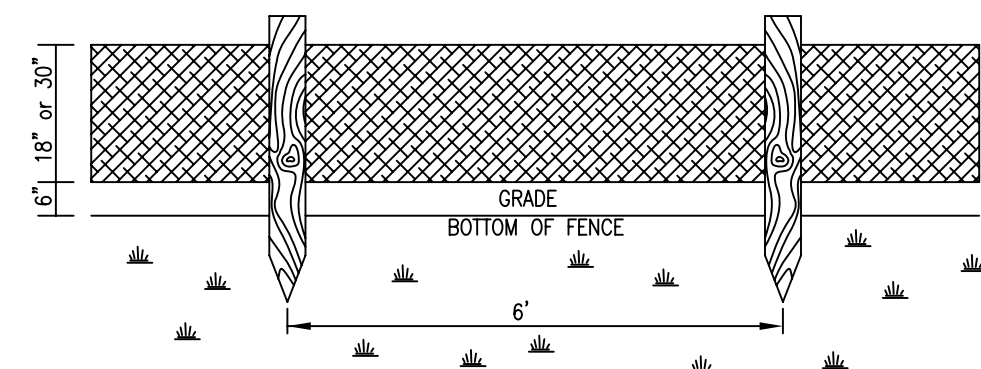
EXISTING LEGEND

- BENCHMARK
- TRAVERSE POINT
- MONUMENT
- IRON PIPE
- IRON ROD
- SANITARY M.H.
- CLEAN OUT
- CATCH BASIN
- CATCH BASIN
- STORM M.H.
- HYDRANT
- GATE VALVE & WELL
- SHUT OFF
- TELEPHONE MANHOLE
- GAS VALVE
- UTILITY POLE
- QUI ANCHOR
- LIGHT POLE
- SIGN
- MANHOLE
- DECIDUOUS TREE
- CONIFEROUS TREE
- CONIFEROUS BUSH
- DECIDUOUS BUSH
- TREE LINE
- CHAINLINK FENCE
- WOOD FENCE
- WALL STONE OR BLOCK
- OVERHEAD UTILITIES
- STORM
- SANITARY
- WATER MAIN
- GAS
- GAS
- SPOT ELEVATION
- FG FINISH GRADE
- FF FINISH FLOOR
- IE INVERT ELEVATION
- TC TOP OF CURB
- GU GUTTER

GENERAL NOTES FOR SEDIMENTATION AND EROSION CONTROL OPERATIONS

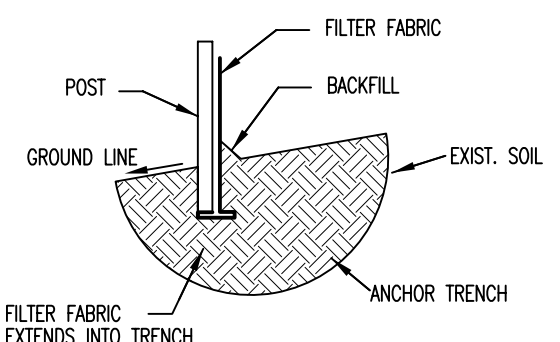
- THE CONTRACTOR SHALL CONSTRUCT THIS PROJECT IN COMPLIANCE WITH PART 91 OF ACT NO. 451 OF 1994, OF THE MICHIGAN COMPILED LAWS ENTITLED "SOIL EROSION AND SEDIMENTATION CONTROL" AS AMENDED.
- THE CONTRACTOR SHALL IMPLEMENT AND MAINTAIN THE SOIL EROSION CONTROL MEASURES AS SHOWN ON THE PLANS BEFORE AND AT ALL TIMES DURING CONSTRUCTION ON THIS PROJECT. ANY MODIFICATIONS OR ADDITIONS TO SOIL EROSION CONTROL MEASURES, DUE TO CONSTRUCTION OR CHANGED CONDITIONS, SHALL BE COMPLIED WITH AS REQUIRED OR DIRECTED BY THE ENGINEER OR ENFORCEMENT AGENCY.
- ALL SOIL EROSION AND SEDIMENTATION CONTROL WORK SHALL CONFORM TO THE PERMIT REQUIREMENTS OF THE ST. CLAIR COUNTY ENVIRONMENTAL HEALTH DEPARTMENT.
- DAILY INSPECTIONS SHALL BE MADE BY THE CONTRACTOR. PERIODIC INSPECTIONS MAY BE MADE BY THE OWNER/ENGINEER, TO DETERMINE THE EFFECTIVENESS OF EROSION AND SEDIMENTATION CONTROL MEASURES. ANY NECESSARY CORRECTIONS SHALL BE MADE WITHOUT DELAY.
- ALL SILT FENCE SHALL BE INSPECTED DAILY. SILT FENCE WHICH IS UNDERMINED, CLOGGED, FALLING OVER, OR OTHERWISE FUNCTIONING IMPROPERLY SHALL BE REPAIRED AND RESTORED TO ITS ORIGINAL INSTALLATION DETAIL.
- THE LOW POINT INLET FILTERS SHALL BE INSPECTED DAILY, AND THE FILTER FABRIC SHALL BE REPLACED WHEN TORN, AND ALSO WHEN CLOGGED AND PREVENTING THE FLOW OF WATER.
- EROSION AND ANY SEDIMENTATION FROM WORK ON THIS SITE SHALL BE CONTAINED ON THE SITE AND NOT ALLOWED TO COLLECT ON ANY OFFSITE AREAS OR IN WATERWAYS. WATERWAYS INCLUDE BOTH NATURAL AND MAN-MADE OPEN DITCHES, STREAMS, STORM DRAINS, LAKES AND PONDS.
- THE CONTRACTOR SHALL INSTRUCT ALL DRIVERS TO CLEAN SOIL MATERIALS FROM TIRES PRIOR TO EXITING THE SITE.
- SHOULD DUST BECOME A PROBLEM ON-SITE, THE CONTRACTOR SHALL USE WATERING OR ANY OTHER SUITABLE METHOD OF DUST CONTROL ACCEPTABLE TO ST. CLAIR COUNTY HEALTH DEPARTMENT.
- ALL MUD/DIRT TRACKED INTO EXISTING STATE/COUNTY ROADS FROM THIS SITE, DUE TO CONSTRUCTION, SHALL BE PROMPTLY REMOVED BY THE CONTRACTOR/BUILDER. ALL MUD/DIRT TRACKED OR SPILLED ON PAVED ROADS/SURFACES WITHIN THIS SITE SHALL BE PROMPTLY REMOVED BY THE CONTRACTOR/BUILDER.
- CONTRACTOR SHALL APPLY TEMPORARY EROSION AND SEDIMENTATION CONTROL MEASURES WHEN REQUIRED AND AS DIRECTED ON THESE PLANS. HE SHALL REMOVE TEMPORARY MEASURES AS SOON AS PERMANENT STABILIZATION OF SLOPES, DITCHES AND OTHER EARTH CHANGES HAVE BEEN ACCOMPLISHED.
- STAGING THE WORK WILL BE DONE BY THE CONTRACTOR AS DIRECTED IN THESE PLANS AND AS REQUIRED TO ENSURE PROGRESSIVE STABILIZATION OF DISTURBED EARTH.
- IMMEDIATELY AFTER SEEDING, MULCH ALL SEEDING AREAS WITH UNWEATHERED SMALL GRAIN STRAW OR HAY, SPREAD UNIFORMLY AT THE RATE OF 1-1/2 TO 2 TONS PER ACRE OR 100 POUNDS (2 OR 3 BALES) PER 1,000 SQUARE FEET. THIS MULCH SHOULD BE ANCHORED WITH A DISC-TYPE MULCH ANCHORING TOOL OR OTHER MEANS, AS APPROVED BY THE CITY OF ST. CLAIR.
- PERMANENT SOIL EROSION CONTROL MEASURES FOR ALL SLOPES, CHANNELS, DITCHES, OR ANY DISTURBED LAND AREA SHALL BE COMPLETED WITHIN 5 CALENDAR DAYS AFTER FINAL GRADING OR THE FINAL EARTH CHANGE HAS BEEN COMPLETED. WHEN IT IS NOT POSSIBLE TO PERMANENTLY STABILIZE A DISTURBED AREA AFTER AN EARTH CHANGE HAS BEEN COMPLETED OR WHERE SIGNIFICANT EARTH CHANGE ACTIVITY CEASES, TEMPORARY SOIL EROSION CONTROL MEASURES SHALL BE IMPLEMENTED IMMEDIATELY. ALL TEMPORARY SOIL EROSION CONTROL MEASURES SHALL BE MAINTAINED UNTIL PERMANENT SOIL EROSION CONTROL MEASURES ARE IMPLEMENTED. ALL PERMANENT SOIL EROSION CONTROL MEASURES WILL BE IMPLEMENTED AND ESTABLISHED BEFORE A CERTIFICATE OF COMPLIANCE IS ISSUED.

SILT FENCE DETAIL
NOT TO SCALE



PROPERTY OF FILTER FABRIC	TEST METHOD	2125
GRAB TENSILE	ASTM-D-4632	WARP 110
		FILL 90
MULLEN BURST	ASTM 3786	275
UV RESISTANCE (STRENGTH RETAINED)	ASTM 4355	70
PERMITTIVITY	ASTM 4491	15

A STURDY, LIGHTWEIGHT, SUNLIGHT RESISTANT, WOVEN POLYPROPYLENE.



SILT FENCE CROSS-SECTION
NOT TO SCALE

UTILITY INFORMATION, AS SHOWN, INDICATES APPROXIMATE LOCATIONS AND TYPES OF FACILITIES ONLY, AS DISCLOSED TO THIS FIRM BY THE VARIOUS UTILITY COMPANY'S RECORDS. NO GUARANTEE IS GIVEN OR IMPLIED AS TO THE COMPLETENESS OR ACCURACY THEREOF.

PRIOR TO CONSTRUCTION, ALL LOCATION AND DEPTHS OF EXISTING OVERHEAD AND UNDERGROUND UTILITIES (IN CONFLICT WITH THE CONSTRUCTION OF PROPOSED IMPROVEMENTS) SHALL BE VERIFIED IN THE FIELD.

DURING CONSTRUCTION, CONTRACTOR SHALL USE EXTREME CAUTION WHEN OPERATING NEAR OVERHEAD AND/OR BURIED UTILITIES. CALL MISS DIG.

TOTAL EARTH DISTURBANCE
±2.9 ACRES

SOIL SURVEY LEGEND

- MB MINORA FINE SANDY LOAM, (0 TO 3 PERCENT SLOPES)
- BIA BOUNT LOAM, (0 TO 2 PERCENT SLOPES)

FLOOD PLAIN NOTE

EXAMINATION OF F.E.M.A.'S FLOOD INSURANCE RATE MAP (COMMUNITY PANEL NUMBER 26090079 G EFFECTIVE DATE MAY 3, 2010) PREPARED IN ACCORDANCE WITH THE NATIONAL FLOOD INSURANCE PROGRAM OF 1968, INDICATES THE SUBJECT PROPERTY IS WITHIN THE LIMITS OF THE 1% ANNUAL CHANCE FLOOD.

EROSION CONTROL MEASURES AND SEQUENCE OF CONSTRUCTION

- CONTRACTOR WILL OBTAIN A SOIL EROSION PERMIT PRIOR TO START OF CONSTRUCTION.
- INSTALL TEMPORARY SOIL EROSION CONTROL MEASURES AS NECESSARY. INSTALL GEOTEXTILE FILTER CLOTH ON ALL INLET STRUCTURES.
- MAINTAIN A 15 FT. BUFFER OF VEGETATION WHERE POSSIBLE AROUND PERIMETER OF SITE.
- INSTALL UTILITIES.
- INSTALL PAVING.
- FINAL GRADE, ESTABLISH VEGETATION AND/OR LANDSCAPE ALL DISTURBED AREAS NOT BUILT OR PAVED UPON.
- CLEAN PAVEMENT AND REMOVE ALL TEMPORARY EROSION CONTROL MEASURES. REESTABLISH VEGETATION AS NECESSARY.
- ALL DIRT AND MUD TRACKED ONTO PUBLIC ROADS SHALL BE REMOVED DAILY.
- STREET CATCH BASINS TO BE PERIODICALLY CLEANED AND FILTER CLOTH CHANGED AND MAINTAINED.
- AFTER COMPLETION OF PAVING, REMOVAL OF FORMS, AND GRADING OF R.O.W., TEMPORARY SEED AND MULCH OF R.O.W. MUST BE COMPLETED.

TIMING SEQUENCE FOR SOIL EROSION AND SEDIMENTATION CONTROL MEASURES

ACTIVITY	2011	
	AUGUST	SEPTEMBER
INSTALL TEMPORARY EROSION CONTROL MEASURES	■	■
ROUGH GRADING & CONSTRUCTION	■	■
COMPLETION OF CONSTRUCTION AND LANDSCAPING	■	■
FINAL GRADING	■	■
INSTALLATION OF PERMANENT EROSION CONTROL MEASURES AND SEEDING	■	■
REMOVAL OF TEMPORARY EROSION CONTROL MEASURES	■	■
MAINTENANCE PERIOD (1 YEAR)		SEPTEMBER 2012

DEVELOPER / OWNER
YALE PUBLIC SCHOOLS
198 SCHOOL DRIVE
YALE, MI 48097
810-387-4274
810-387-4418

FCE
Project Control Engineering, Inc.
Engineers Surveyors Consultants
P.O. Box 307
2420 Pre-Tremble Road
Algonac, MI 48001
Phone 810.794.1931
Fax 810.794.3331
www.pce-eng.com

COPYRIGHT © 2011
THIS DOCUMENT AND THE SUBJECT MATTER CONTAINED HEREIN IS PROPRIETARY AND MAY NOT BE REPRODUCED WITHOUT THE WRITTEN PERMISSION OF:
PROJECT CONTROL ENGINEERING, INC.

DRAWING STATUS:

- PRELIMINARY CONSTRUCTION
- FINAL CONSTRUCTION
- RECORD DOCUMENTS

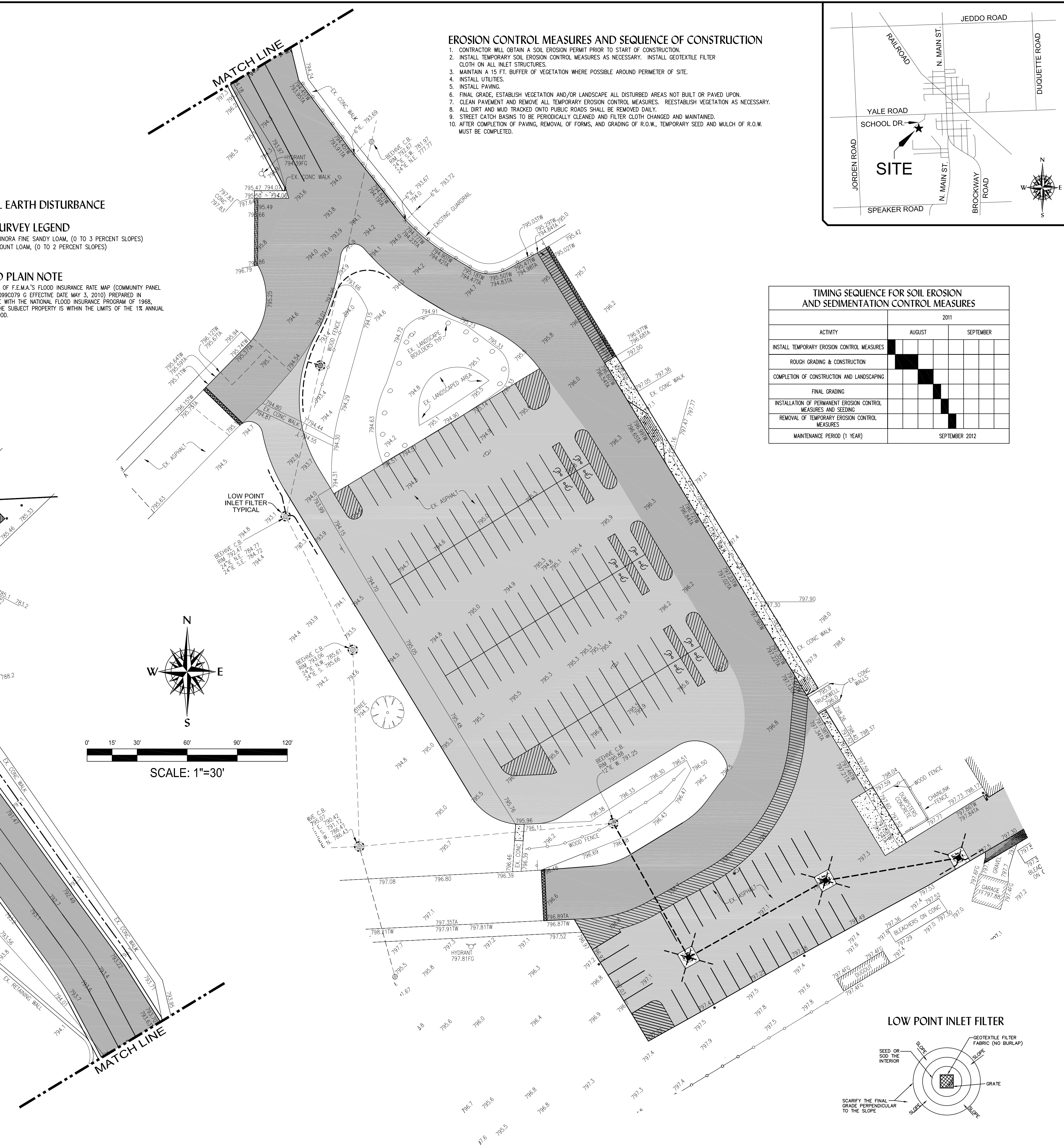
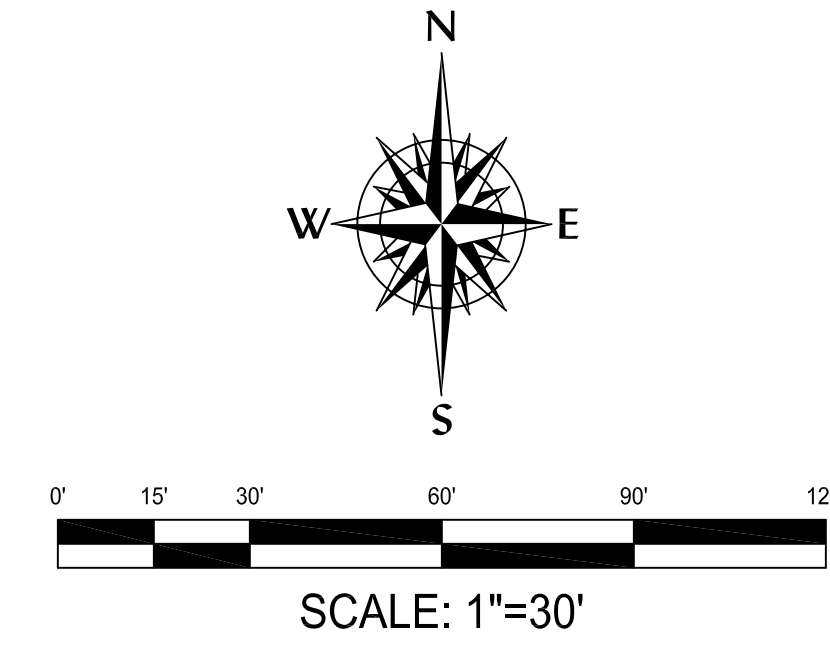
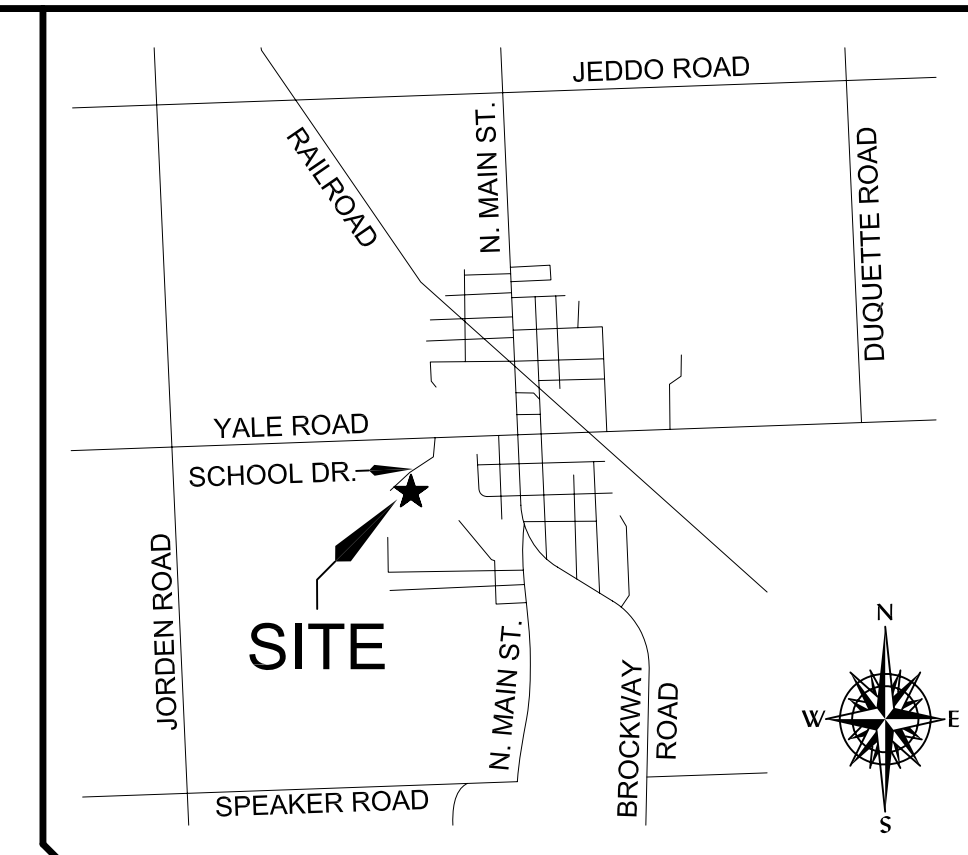
REVISIONS:

SOIL EROSION PLAN
YALE PUBLIC SCHOOLS
2011 PAVING REHABILITATION PROGRAM

3 WORKING DAYS BEFORE YOU DIG CALL MISS DIG
1-800-482-7171 (TOLL FREE)

JOB NUMBER: **11-062**
DRAWN BY: **TMG**
CHECK BY: **JH**
DRAWING ID: **11-062 topo.dwg**
DATE: **8-4-11**
SCALE: **1" = 30'**

3 of 3



LOW POINT INLET FILTER

